

Physical Geography Field School – 2026

Glaciers, Landforms, and
Environmental Change

Classroom: 27 April – 1 May

Field: 3 – 15 May

Information Session:

4:30 pm, 5 November

Room 10-4588

Questions: joseph.shea@unbc.ca

Website: jmshea.opened.ca/2026fieldschool



The glacier was here in
Le glacier était ici en

1948

Field School Objectives



KNOWLEDGE: mountain glaciers, landforms, and environmental change in western Canada



SKILLS: planning, logistics, field observations, notetaking, problem solving, and geospatial analysis and interpretation

RPAS survey, satellite imagery

Snow survey, meteorological/hydrological observations



FIELDWORK: teamwork and interpersonal skills, shared camp duties, group dynamics

Dates

- **27 April – May 1:** Lectures/safety/planning at Prince George UNBC campus (or via Zoom)
- **3 – 15 May:** Field School in BC and Alberta. Two vans, two instructors, 1 TA, maximum 15 students

Prereqs

- None
- Open to all 3rd and 4th year students

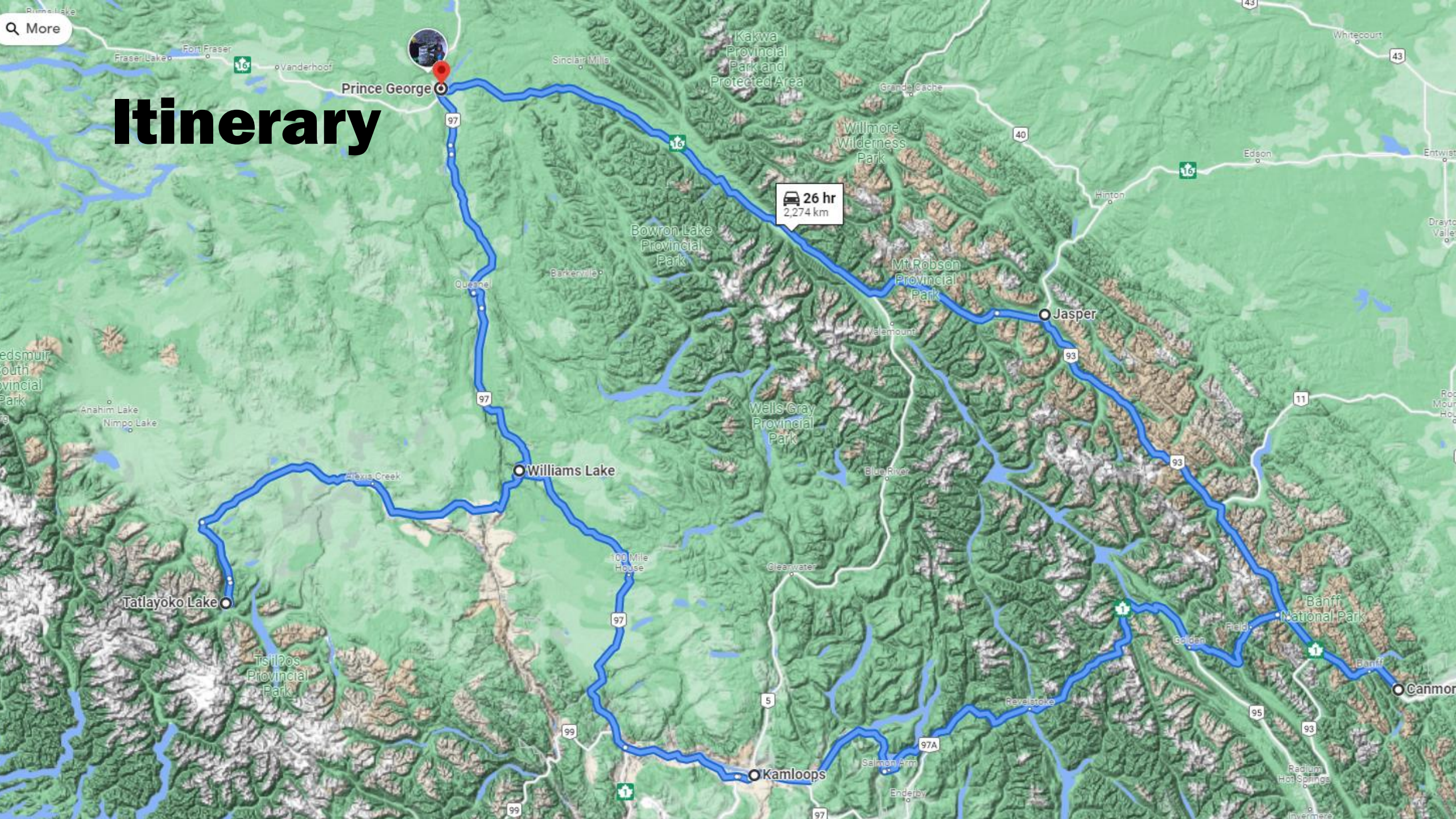
Courses

GEOG 333-3/NRES 763-3

- Physical Geography Field School
- Field notes, observations, camp organization, teamwork, participation

GEOG 498-3/NRES 798-3: Glaciers, Landforms, and Environmental Change

- Lectures, fieldwork, mapping, computer labs (python notebooks), final project
- Assignments can be completed during field school, or submitted afterwards (until June 15th)



Q More

Itinerary

26 hr
2,274 km

Prince George

Bowron Lake Provincial Park

Willmore Wilderness Park

Mt Robson Provincial Park

Jasper

Wells Gray Provincial Park

Williams Lake

Tatlayoko Lake

Tsatiapos Provincial Park

Kamloops

Banff National Park

Canmore

Itinerary: May 3 – May 15

Date	Itinerary	Stops/Activities	Accommodation
May 3	Prince George → Valemount	Ancient Forest (snow survey); McBride/Valemount (geohazards, water scarcity); Overlander Falls	Canoe Mountain Campground
May 4	Valemount → Jasper	Mount Robson (hike to Kinney); geohazards, heat dome; Old Fort Hike (wildfire)	Wapiti/Whistlers Campground
May 5	Jasper → Rampart Creek	Maligne Canyon walk; Athabasca Falls; Icefields Centre/Parker Ridge (landform mapping)	Rampart Creek Hostel
May 6	Rampart Creek → Canmore	Bow Lake; Bow Summit (snow survey); Lake Louise; Minnewanka Reservoir; Leanne Allison (Losing Blue)	ACC clubhouse, Canmore
May 7	Canmore → Golden	Hay Meadow (John Pomeroy); Radium Hot Springs; Golden;	Cedar Lake Rec Site
May 8	Golden → Kamloops	Illecillewaet Glacier; Roger's Pass; Revelstoke Dam/BC Forest Museum	Knutsford Campground
May 9	Kamloop → Williams Lake	Crystal Huscroft meeting at TRU; Savona; Chasm	Meldrum Lake Rec Site
May 10	Farwell Canyon → Tatlayoko Lake	Farwell Canyon (with Tsilhqot'in FN); Tatla Lake; Homathko station/gauging site	Tatlayoko Field Station
May 11	Tatlayoko	Weather station setup; stream temperature measurement install.	Tatlayoko Field Station
May 12	Tatlayoko	RPAS wetland survey, Anahim Peak	Tatlayoko Field Station
May 13	Tatlayoko	Alpine hike/rest/work day	Tatlayoko Field Station
May 14	Tatlayoko	Data collection/Analysis/Anahim Peak	Tatlayoko Field Station
May 15	Tatlayoko	Return to PG	

Fees

- Regular undergraduate course tuition fees (6 credits = \$1221)
- Special course fees: \$1500
 - 10% deposit (\$150) paid by 15 February 2025
 - Final fees will depend on number of students – small refund possible!

Item	Cost per student
Accommodation	
• camping (5 nights)	\$100
• hotels/hostels (3 nights, double occupancy or dorm)	\$250
• Tatlayoko Field Station (6 nights)	\$250
Van rental + fuel + insurance (13 days)	\$450
Food + restaurant meals	\$400
Permits	\$50
MAXIMUM TOTAL	\$1500

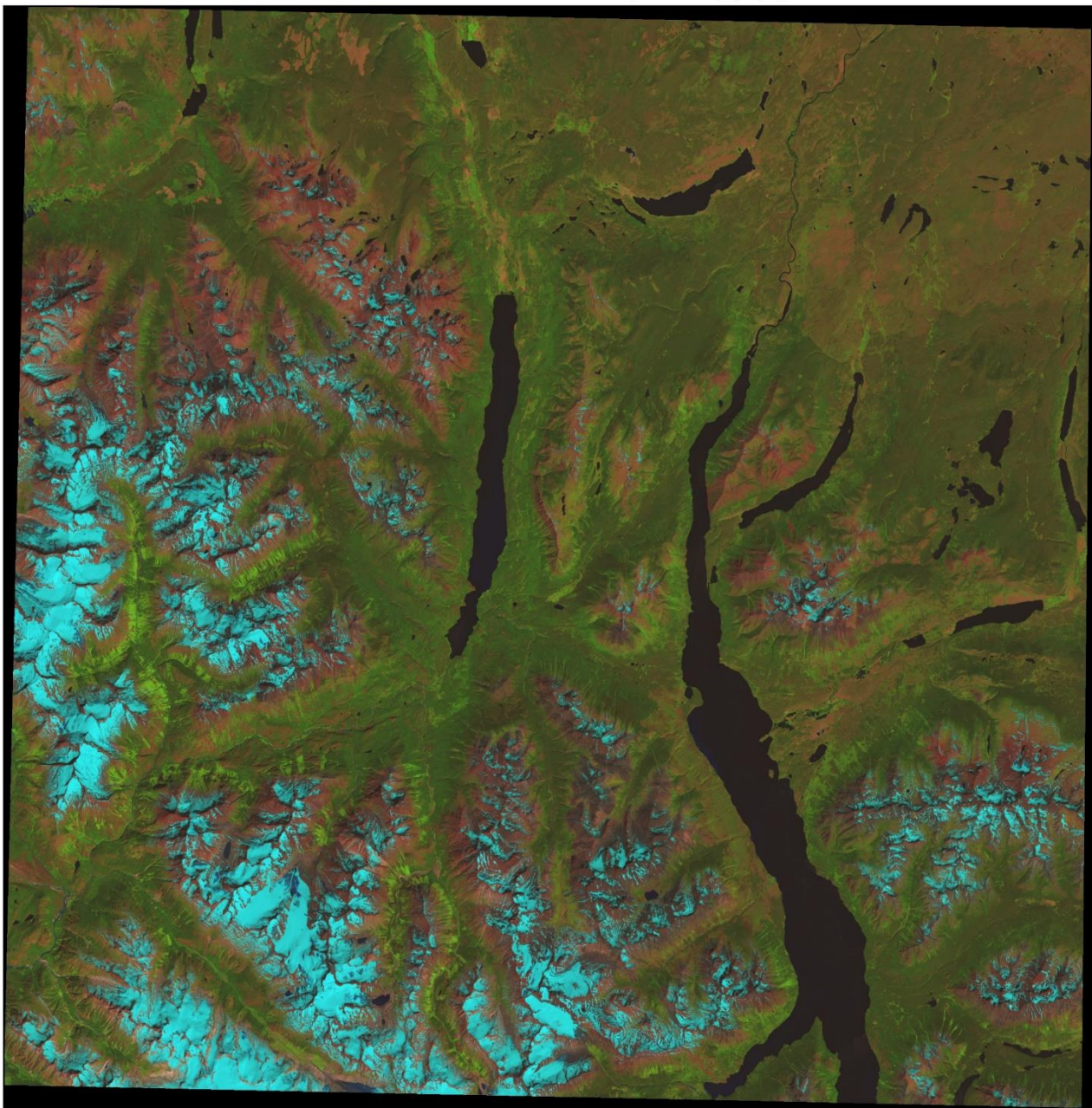




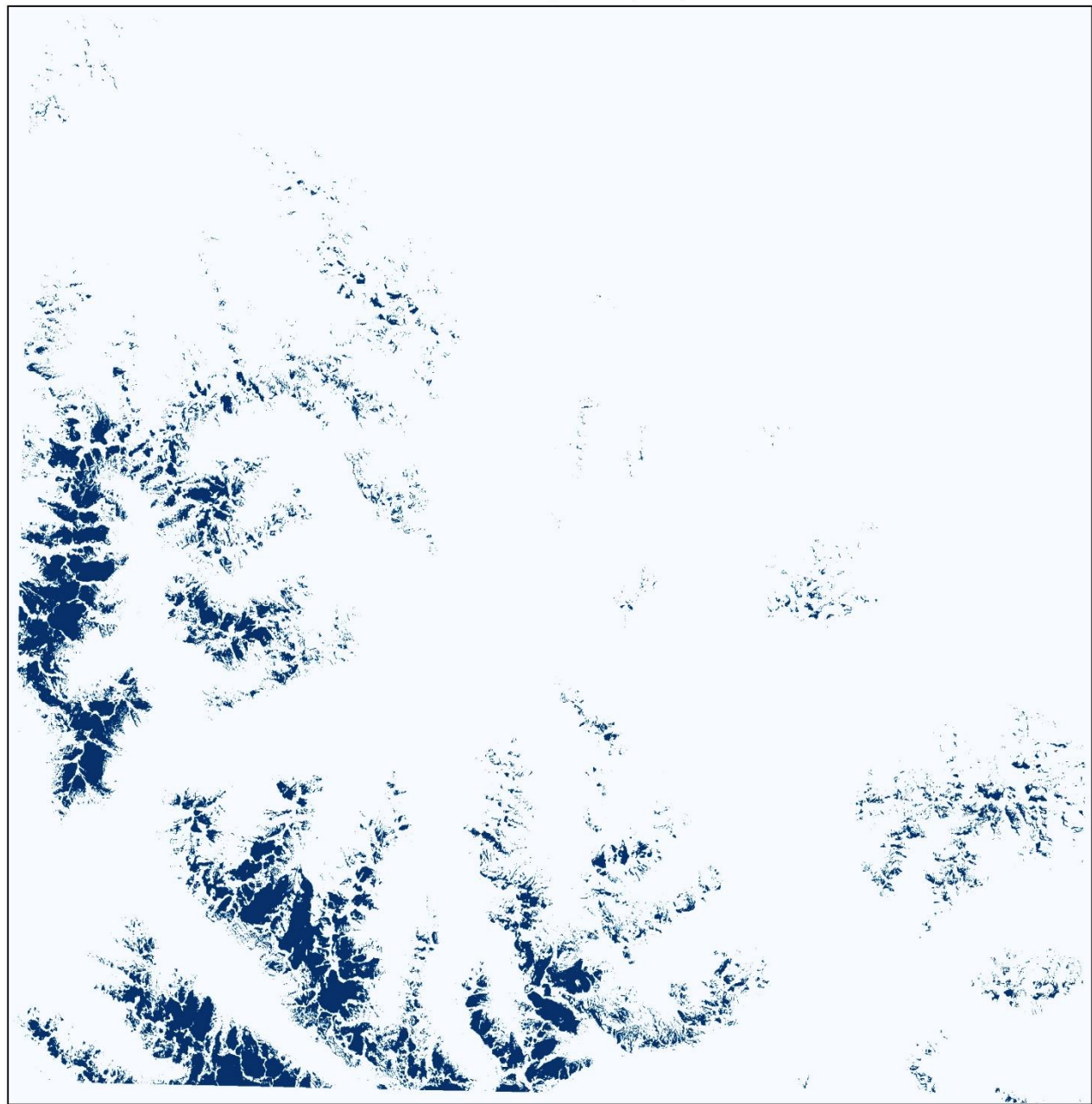




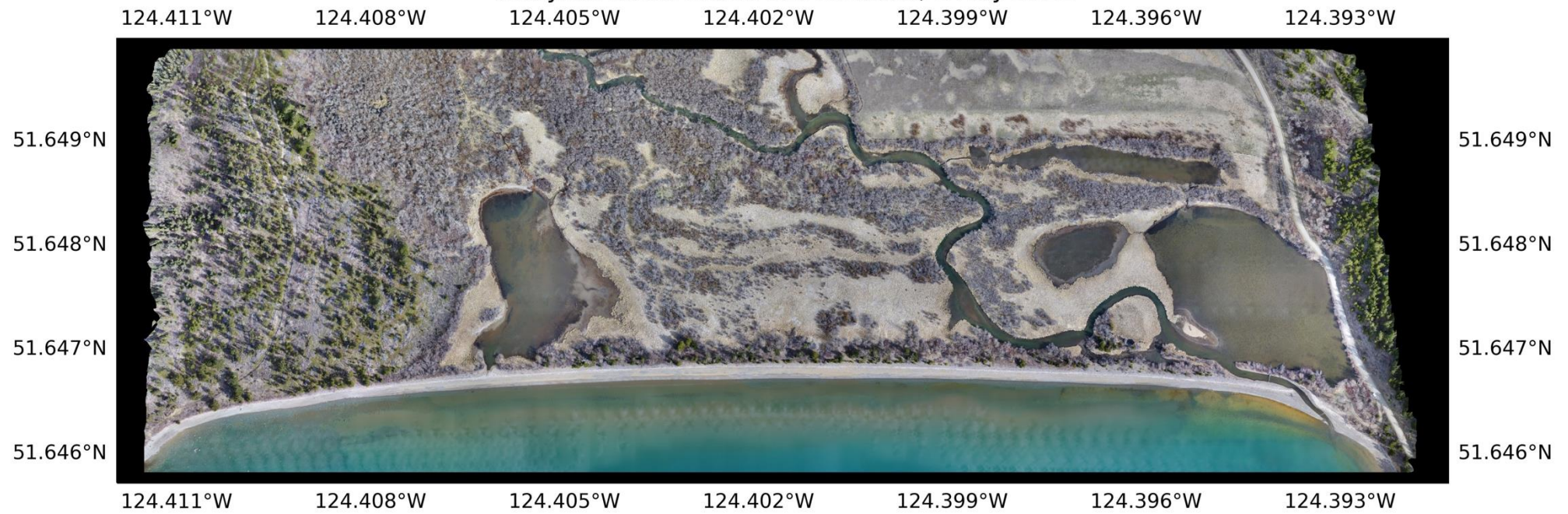
Landsat 8 False Colour Composite (6,5,4)



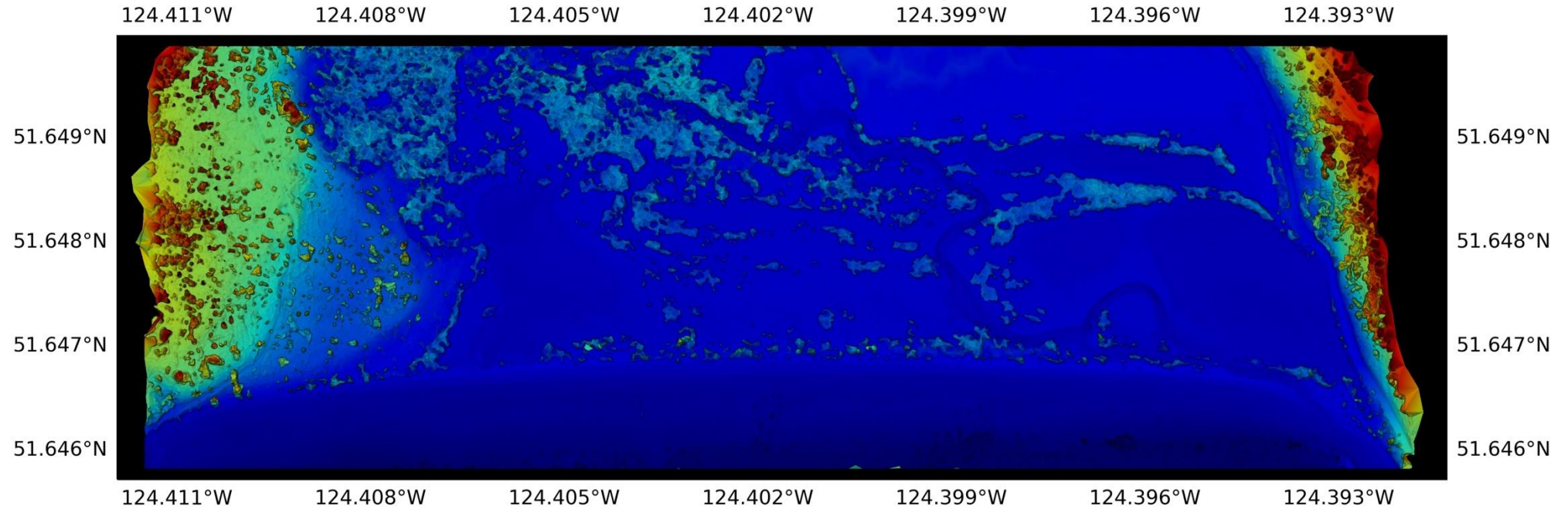
Snow Mask (SWIR1/NIR)



Tatlayako North Beach Orthomosaic, 8 May 2022



Tatlayako North Beach DEM, 8 May 2022







Still interested?

GEOG 333/NRES 763 Physical
Geography Field School, 2026

